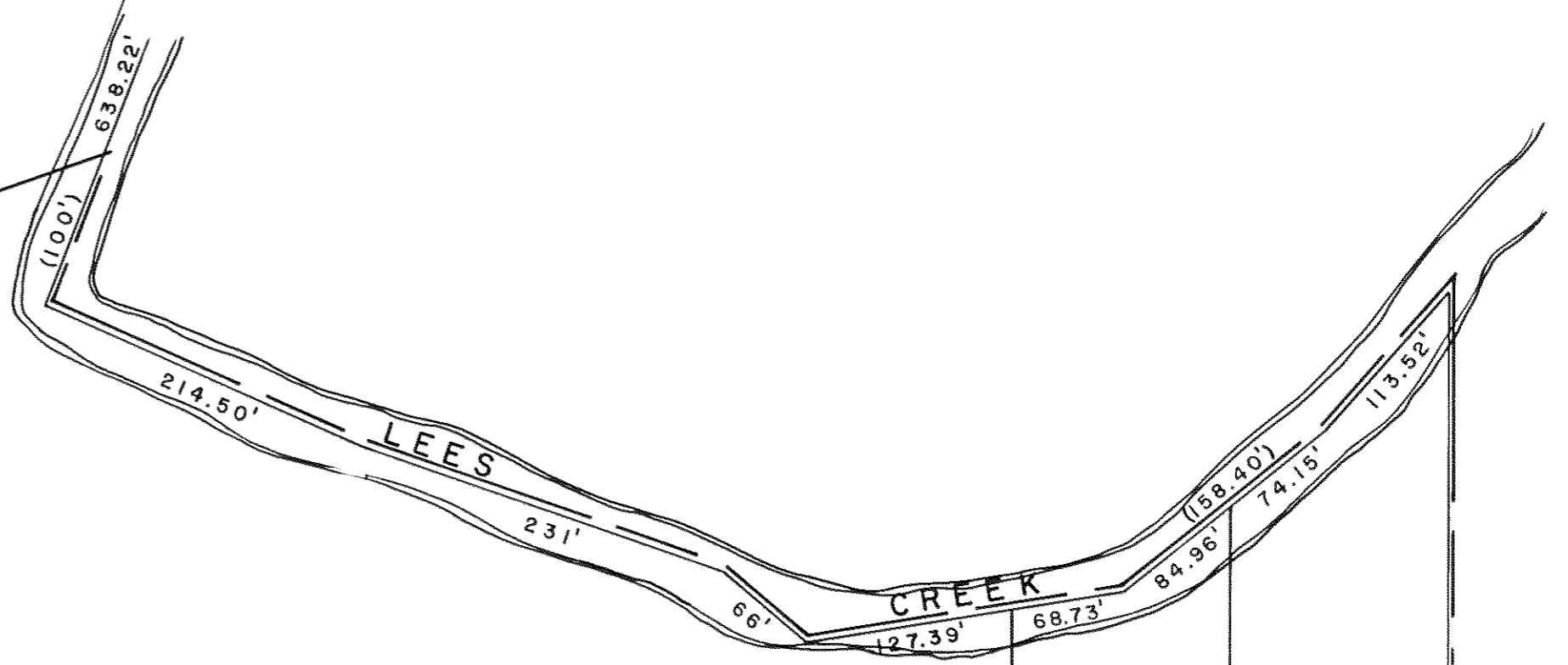
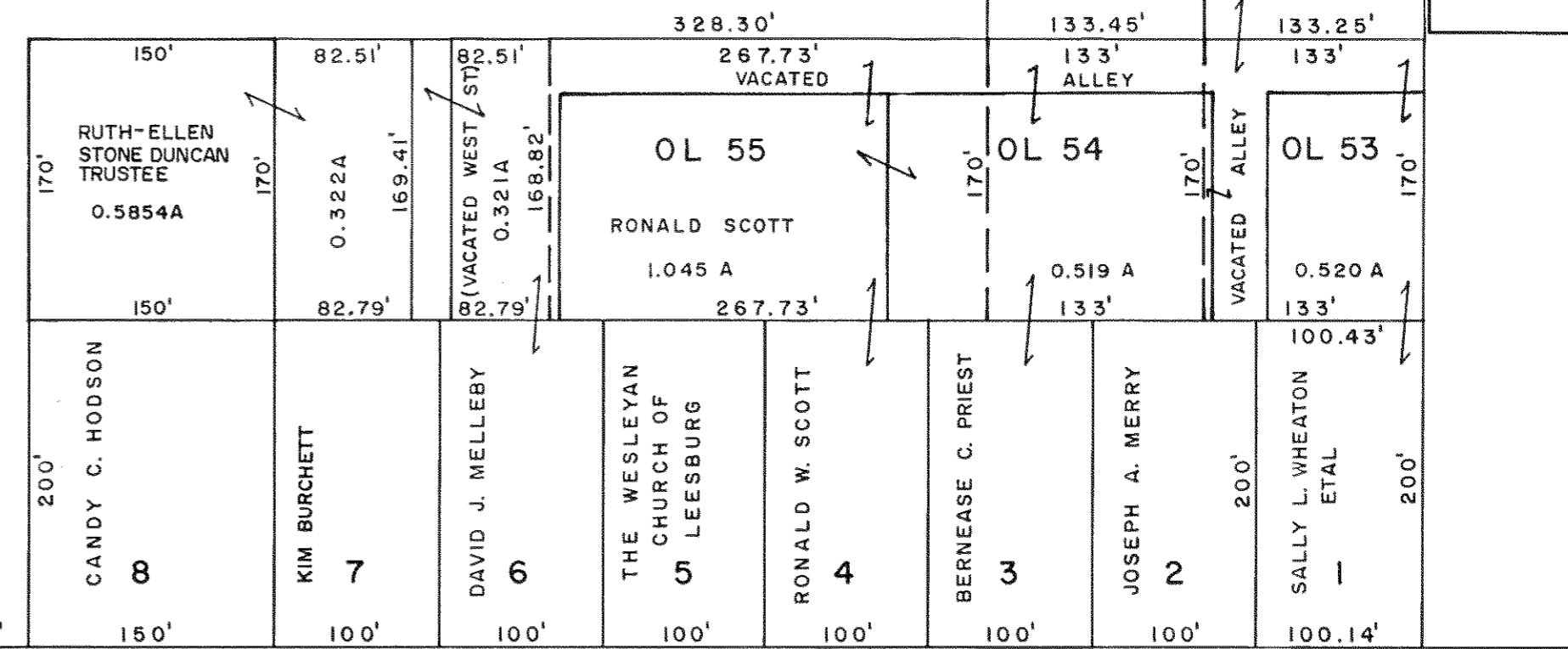
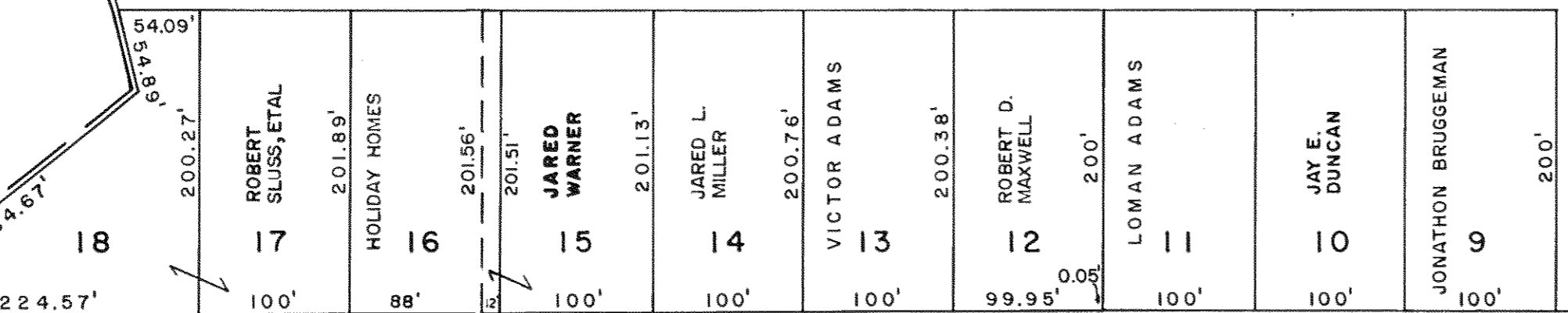




CORPORATION LINE

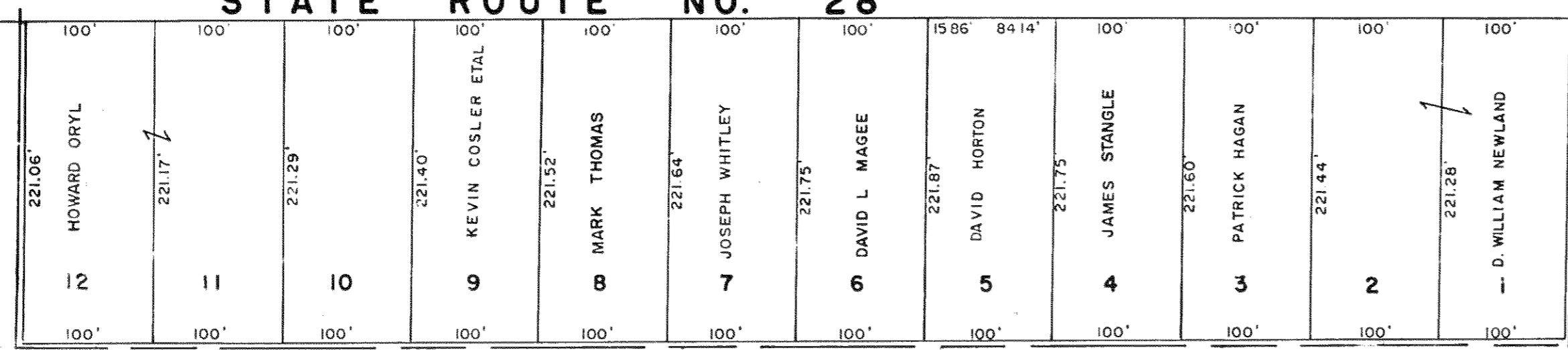


JAMES CUMMINGS  
62.187A TOTAL



STATE ROUTE NO. 28

MAIN STREET



BARRETTGROVE SUBDIVISION  
LEESBURG CORPORATION LAN  
STEVENS HEIGHTS SUBDIVISION  
HIGHLAND COUNTY, OHIO

R. LOWELL McCARTY,  
HIGHLAND COUNTY ENGINEER

7-28-77

SCALE 1" = 100'

