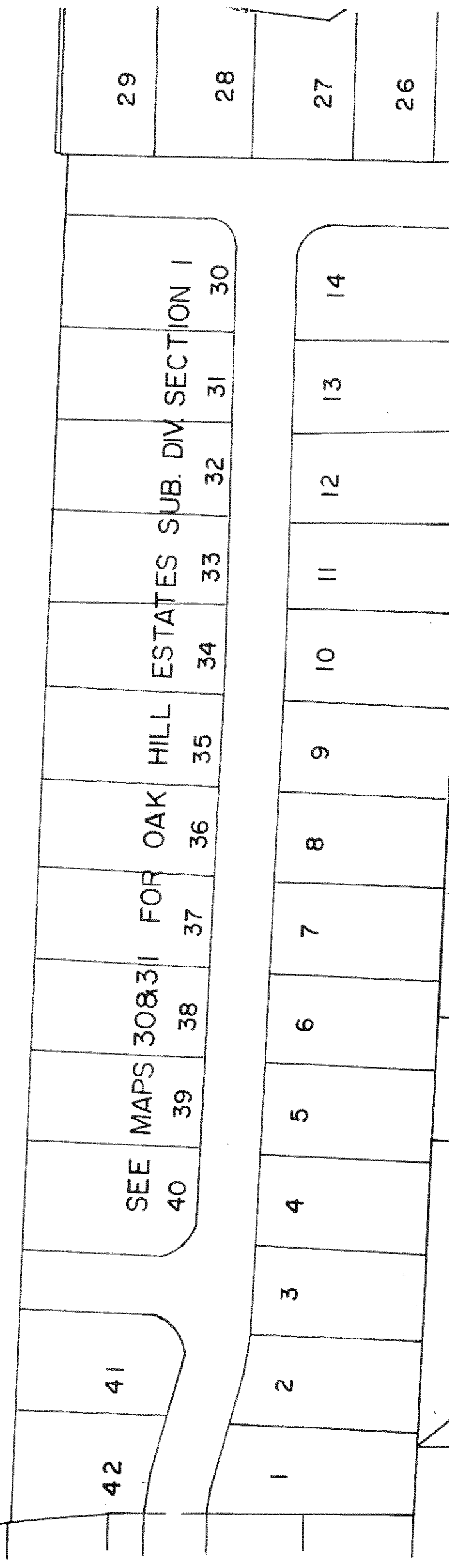
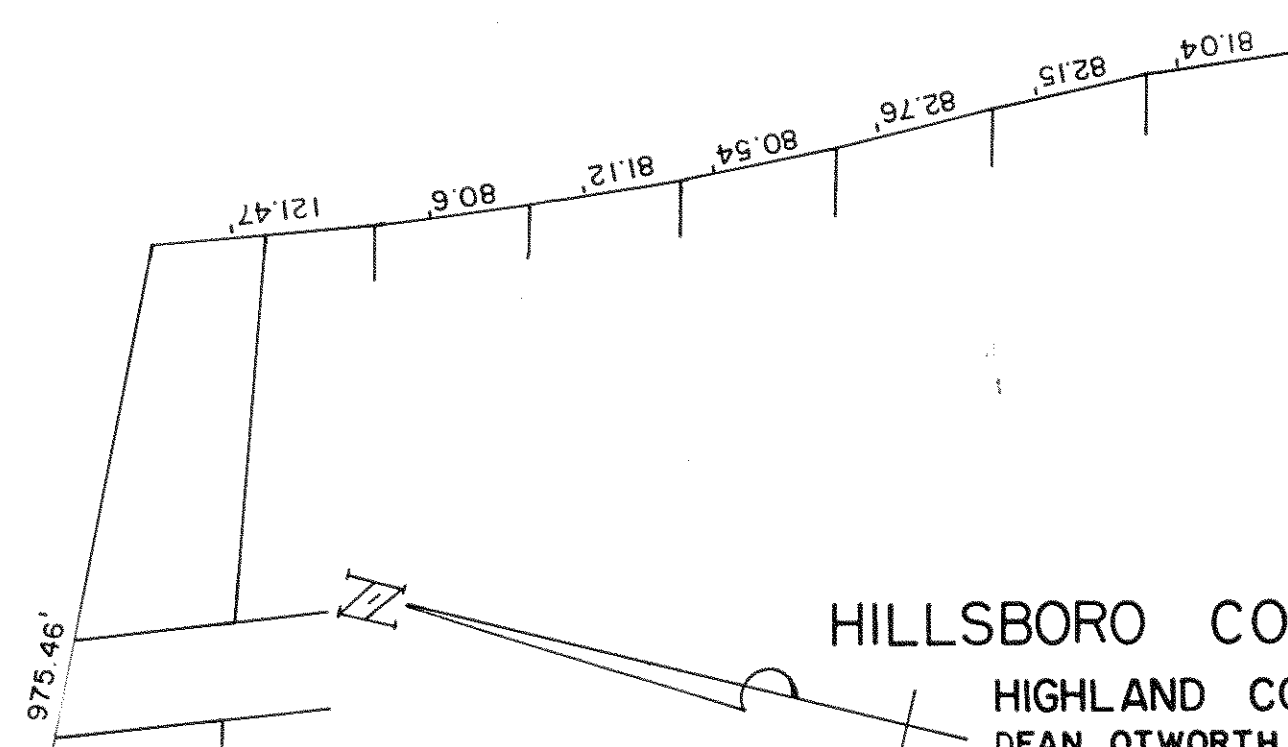


OAK HILL ESTATES
108.2281A - TOTAL
89.6281A - CORP.

589.55'

HILLSBORO CORPORATION LAND
HIGHLAND COUNTY, OHIO
DEAN OTWORTH
HIGHLAND COUNTY ENGINEER
SCALE 1" = 100'

11-30-95



122.27' 800.95' 358.38'