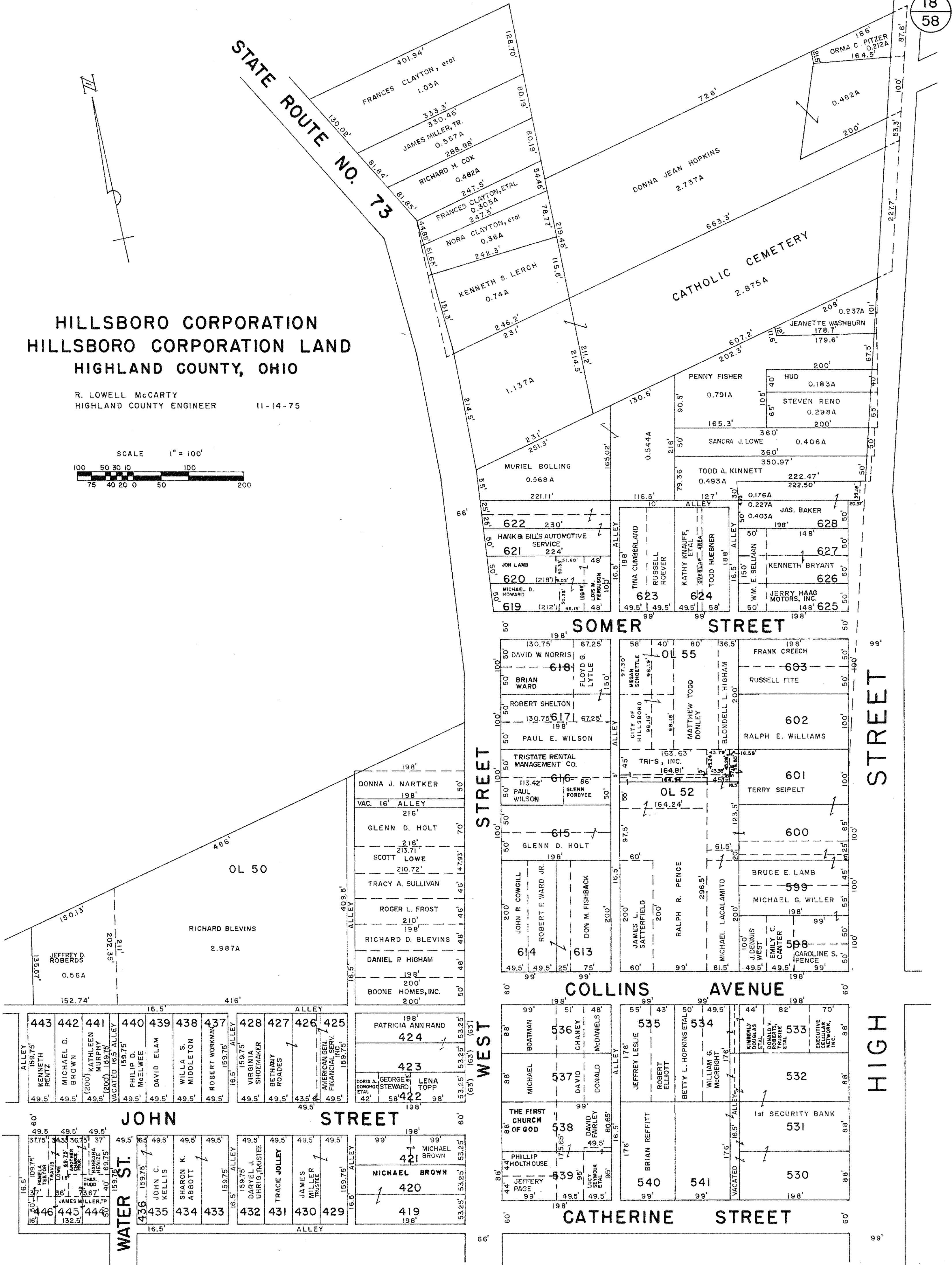
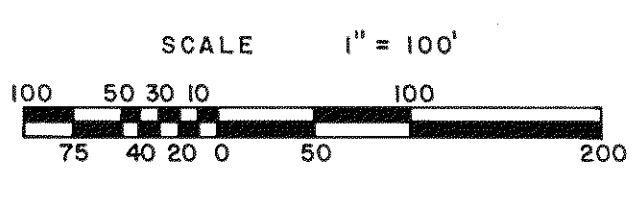


STATE ROUTE NO. 73

HILLSBORO CORPORATION HILLSBORO CORPORATION LAND HIGHLAND COUNTY, OHIO

R. LOWELL McCARTY
HIGHLAND COUNTY ENGINEER 11-14-75



ALLEY	443	442	441	440	439	438	437	ALLEY	428	427	426	425
159.75'	KENNETH RENTZ	MICHAEL D. BROWN	KATHLEEN MURPHY	PHILIP D. McELWEE	DAVID ELAM	WILLA S. MIDDLETON	ROBERT WORKMAN	16.5'	VIRGINIA SHOEMAKER	BETHANY ROADES	AMERICAN GEN. FINANCIAL SERV. INC.	PATRICIA ANN RAND
49.5'	49.5'	49.5'	49.5'	49.5'	49.5'	49.5'	49.5'	16.5'	49.5'	49.5'	49.5'	198'
ALLEY	446	445	444	443	442	441	440	ALLEY	436	435	434	433
16.5'	TRAVIS LOWE	TRAVIS LOWE	BARBARA HENZER	BARBARA HENZER	BARBARA HENZER	BARBARA HENZER	BARBARA HENZER	16.5'	JOHN C. KELLIS	SHARON K. ABBOTT	TRACY JOLLEY	JAMES MILLER TRUSTEE
49.5'	49.5'	49.5'	49.5'	49.5'	49.5'	49.5'	49.5'	16.5'	49.5'	49.5'	49.5'	49.5'
ALLEY	432	431	430	429	ALLEY	421	420	419	ALLEY	424	423	422
159.75'	DARYEL J. UHRIG, TRUSTEE	TRACY JOLLEY	JAMES MILLER TRUSTEE	MICHAEL BROWN	16.5'	MICHAEL BROWN	MICHAEL BROWN	198'	16.5'	PATRICIA ANN RAND	423	422
49.5'	49.5'	49.5'	49.5'	49.5'	16.5'	49.5'	49.5'	198'	16.5'	198'	49.5'	49.5'

99'	536	535	534	533	532	531	530
BOATMAN	CHANEY	JEFFREY LESLIE	BETTY L. HOPKINS ETAL	KIMBERLY DOUGLAS	1st SECURITY BANK	1st SECURITY BANK	EXECUTIVE CELLULAR NETWORK, INC.
88'	88'	176'	49.5'	88'	88'	88'	88'
MICHAEL	DAVID	ROBERT ELLIOTT	WILLIAM G. MCCREIGHT	532	531	530	530
88'	88'	99'	176'	88'	88'	88'	88'
THE FIRST CHURCH OF GOD	DAVID	BRIAN REFFITT	VACATED	532	531	530	530
99'	99'	99'	16.5'	88'	88'	88'	88'
PHILLIP HOLTHOUSE	DAVID FAIRLEY	540	541	532	531	530	530
88'	88'	99'	99'	88'	88'	88'	88'
JEFFERY PAGE	LUCY SEYMOUR ETAL	540	541	532	531	530	530
99'	99'	99'	99'	88'	88'	88'	88'