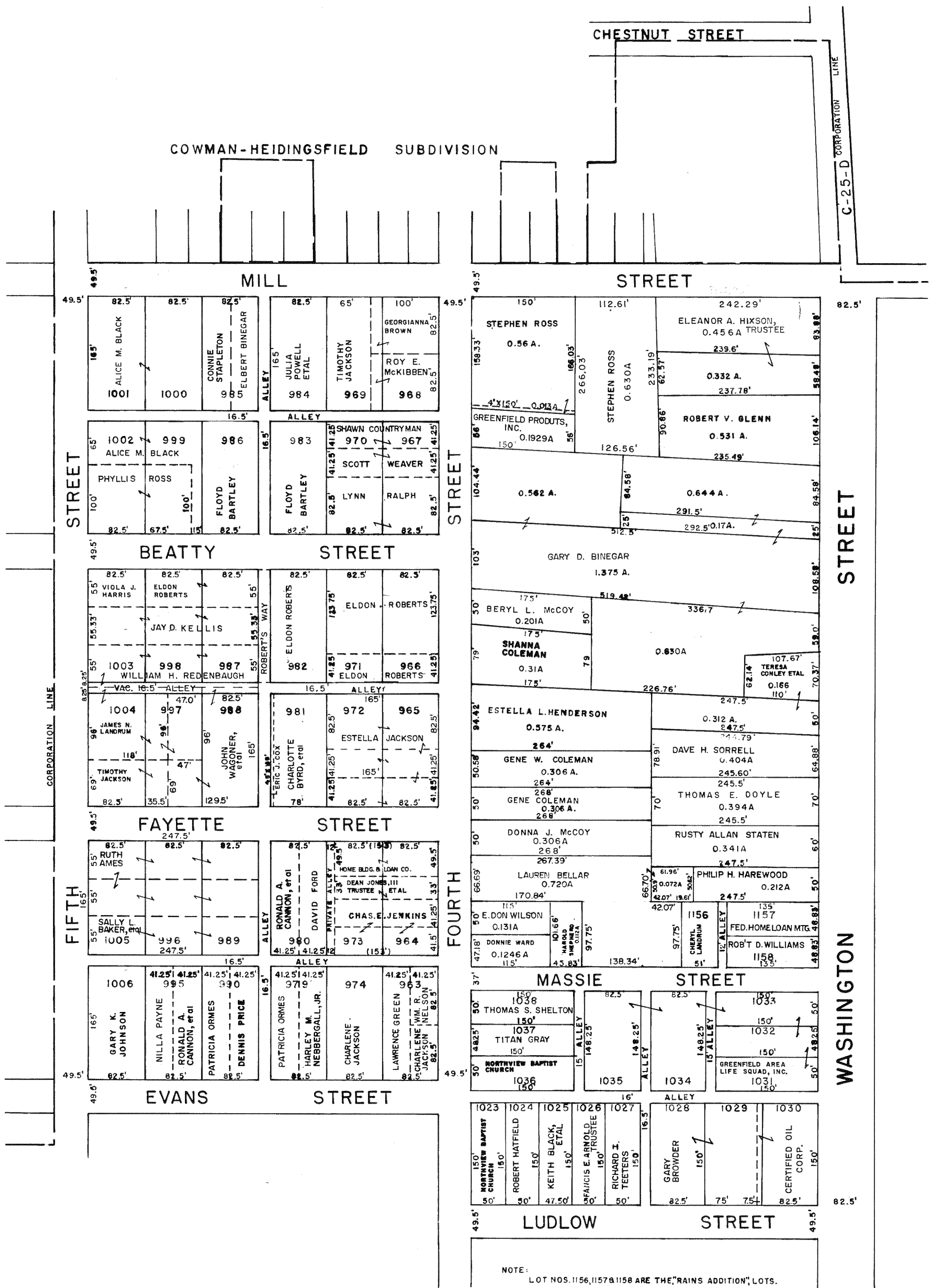


COWMAN-HEIDINGSFIELD SUBDIVISION

CHESTNUT STREET

C-25-D CORPORATION LINE

MADISON TOWNSHIP  
BEATTY SUBDIVISION



GREENFIELD CORPORATION &  
GREENFIELD CORPORATION LAND  
HIGHLAND COUNTY, OHIO

R. LOWELL McCARTY  
HIGHLAND COUNTY ENGINEER

10-7-71