

TRACT REGISTER OF ACQUISITION AFTER 1, JAN. 1943

AUTH.	TRACT NO.	LAND OWNER	ACREAGE					REMARKS
			FEE	EASMT	PERMIT	TRANS.	LICENSE	
	1200E-1	CITY OF GREENFIELD, OHIO		12.47				
	1200E-2	CITY OF GREENFIELD, OHIO		1.36				
	1202E-1	MOGENE PATTON JINKS AND ROY EARL JINKS		12.11				
	1202E-2	MOGENE PATTON JINKS AND ROY EARL JINKS		12.75				
	1203E-1	DONALD B. MURPHY & CLARA F. MURPHY		1.29				
	1203E-2	DONALD B. MURPHY & CLARA F. MURPHY		1.15				
	1204E	KENNETH B. BRYANT AND DOROTHY M. BRYANT		0.21				
	1205E	HARLEY A. GOSSETT, AKA H. A. GOSSETT		0.45				
	1207E	TRAD A. GOSSETT AND NORMA JEAN GOSSETT		0.05				
	1208E-1	FRANK PATTON		14.68				
	1208E-2	FRANK PATTON		6.02				
	1209E	ROBERT LEE WISE, ET UX		1.44				
	1210E	FLOYD MATLACK, JR, ET UX		28.14				
	1211E	MOGENE PATTON JINKS AND ROY EARL JINKS		3.93				
	1212E-1	RODERICK THOMAS		0.62				
	1212E-2	RODERICK THOMAS		4.53				
	1212E-3	RODERICK THOMAS		0.84				
	1213E	HOWARD W. ROBINSON, ET AL		7.40				
	1214E	HARLEY MOREHEAD, ET AL		2.45				
	1216E	ROBERT R. GOLDSBERRY AND MAE GOLDSBERRY		1.47				
	1123E-3	DETROIT TOLEDO AND IRONTON RAILROAD COMPANY					SEE SEGMENT II TRACT REGISTER FOR ACREAGE	

PRELIMINARY

PROJECT MAP

DEPT. OF THE ARMY  
 USING SERVICE CORPS OF ENGINEERS  
 LOCATION OF PROJECT  
 STATE OHIO  
 COUNTY FAYETTE, HIGHLAND, & ROSS  
 DIVISION OHIO RIVER  
 DISTRICT HUNTINGTON  
 ARMY AREA I ST  
 50 MILES SW OF COLUMBUS  
 22 MILES W OF CHILLICOTHE

TRANSPORTATION FACILITIES

RAILROADS  
 STATE ROADS 138, 41, 753, & 28  
 FEDERAL ROADS 50  
 AIR LINES

ACQUISITION

TOTAL ACRES ACQUIRED

FEE  
 PUBLIC DOMAIN { WITHDRAWAL  
 USE PERMIT  
 USE PERMIT (OTHER THAN P. D.)  
 TRANSFER {  
 LEASE  
 LESSER INTERESTS { SEE SEGMENT I

DISPOSAL

TOTAL ACRES DISPOSED OF

SOLD  
 PUBLIC DOMAIN { WITHDRAWAL  
 USE PERMIT  
 USE PERMIT (OTHER THAN P. D.)  
 TRANSFERRED {  
 LEASES TERMINATED  
 LESSER INTERESTS TERM.  
 REASSIGNED  
 OTHER

LEGEND

EXCEPT FOR THE SPECIAL SYMBOLS SHOWN BELOW MAP SYMBOLS ARE STANDARD IN ARMY MAP SERVICE TECHNICAL MANUAL NO. 23.

RESERVATION LINE  
 RESERVATION LINE (Actual Survey)  
 TRACT BOUNDARY LINE  
 TRACT NUMBER (1200)  
 CONTOUR LINE (840)  
 DISPOSAL  
 EXTENDED OWNERSHIP LINE

SEGMENT 12

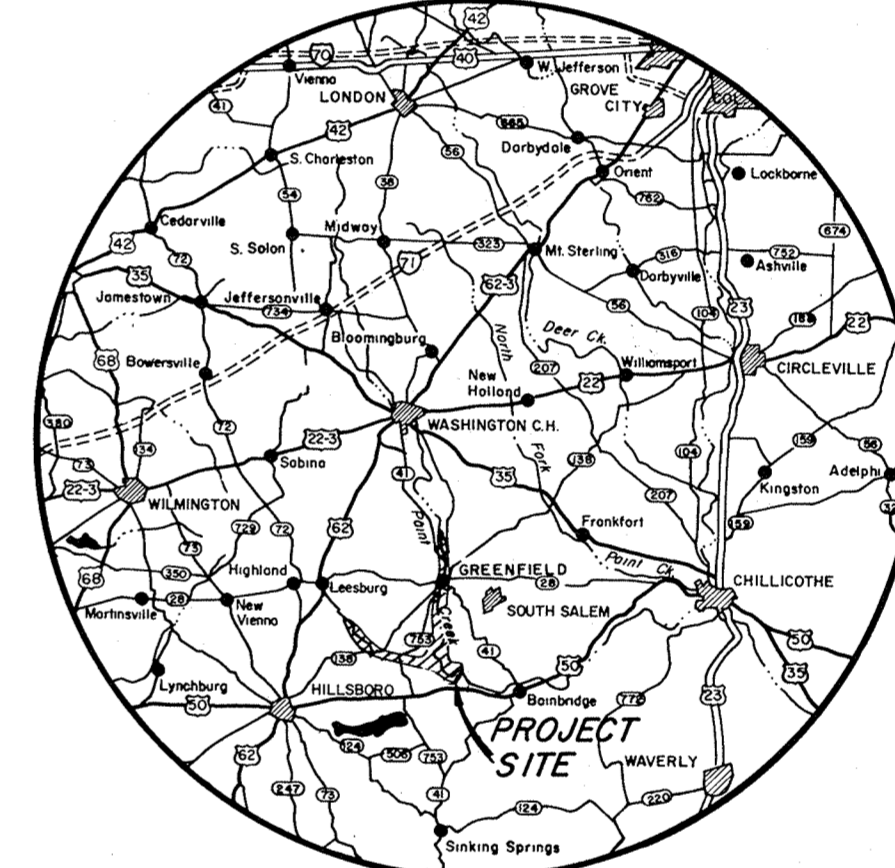
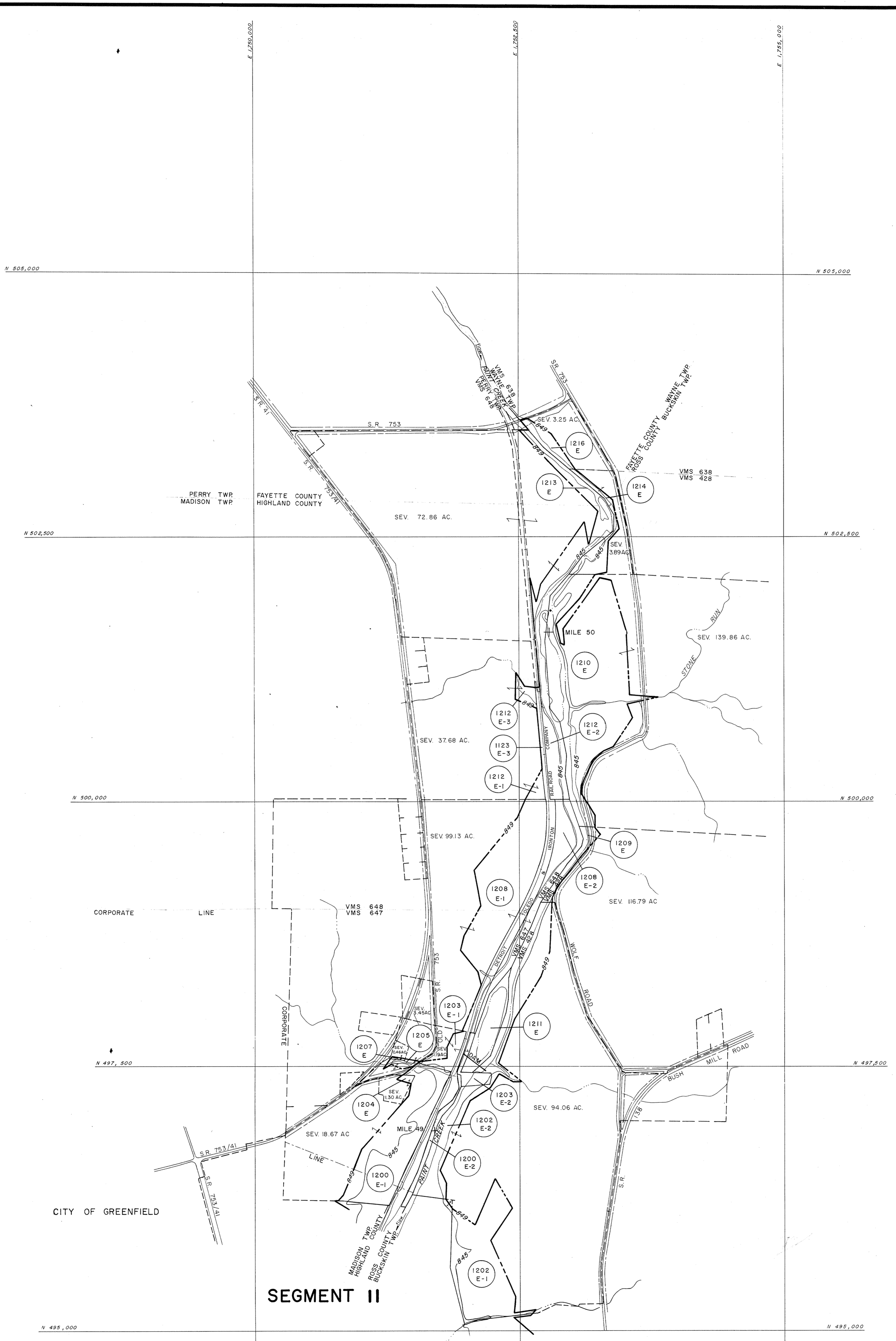
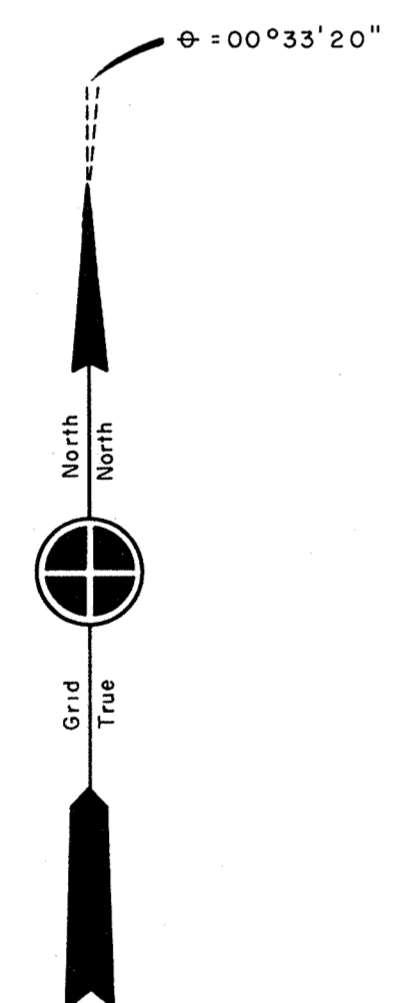
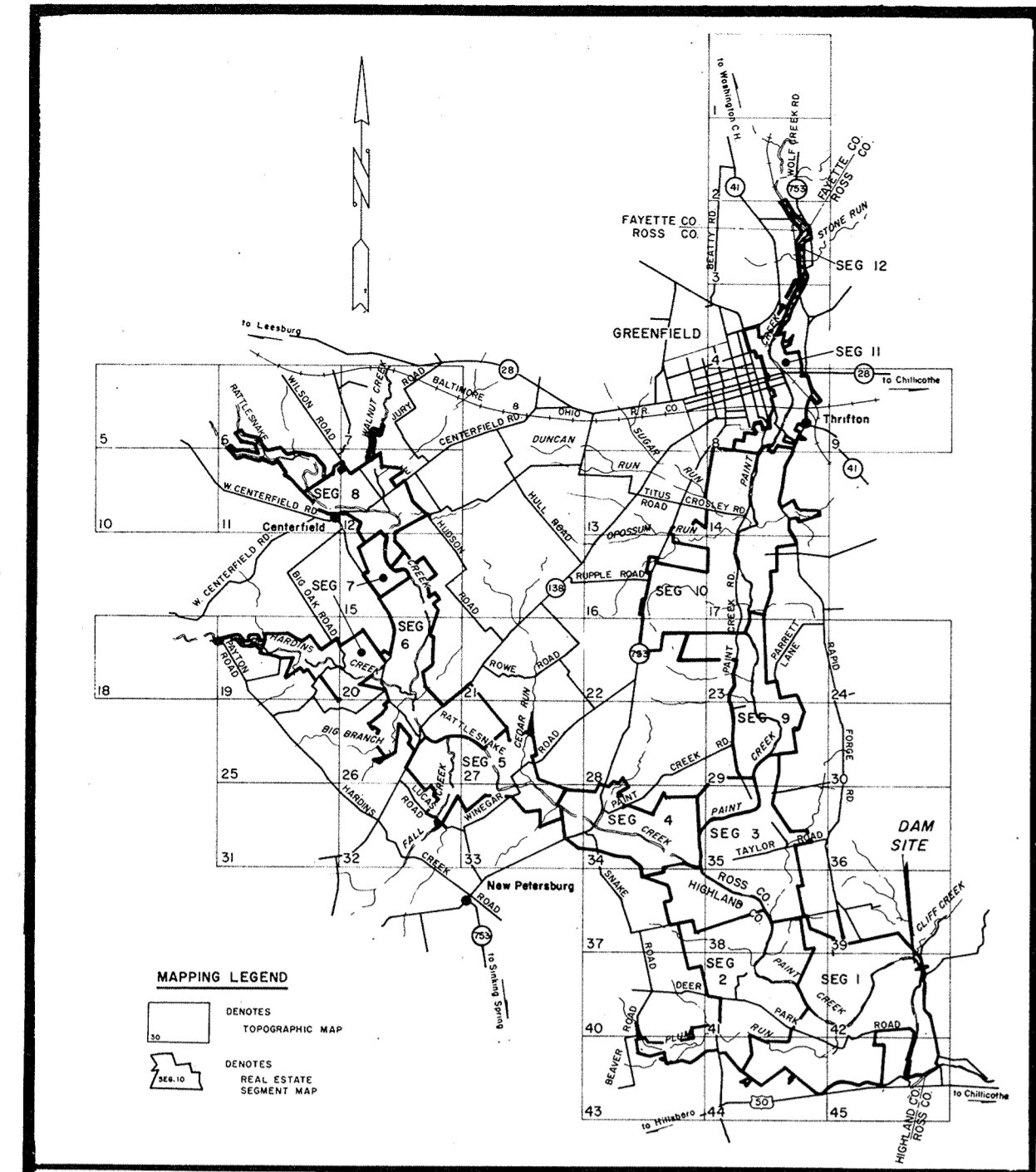
DEPARTMENT OF THE ARMY  
 U. S. ARMY ENGINEER DISTRICT, HUNTINGTON  
 CORPS OF ENGINEERS  
 OHIO RIVER DIVISION

REAL ESTATE

PAINT CREEK LAKE

DRAWN BY: HGW  
 CHECKED BY: RWA  
 CHECKED BY: CHR  
 SUBMITTED BY:  
 RECOMMENDED BY:  
 APPROVED BY:  
 OFFICE, CHIEF OF ENGINEERS, WASHINGTON 25, D. C.

DATE: 23 April 1947  
 SCALE IN FEET  
 SHEET 12 OF 12 DRAWING NO.



NOTES:  
 The boundary of this project was compiled from deed descriptions, and aerial surveys, etc.  
 This map is drawn on the Ohio State Plane Coordinate System, South Zone.  
 The aerial photography, ground control and mapping of the land depicted on this sheet was performed by Berger Associates, Ltd., Columbus, Ohio, under Contract No. DA-46-022-CIVENG-63-497.  
 Tract numbers having "E" suffix denotes usual perpetual flowage easements unless otherwise specified.

CONTOUR LEGEND  
 840 Guide Taking Contour  
 845 Maximum Flood Control Pool  
 790 Permanent Pool

MICROFILMED	DATE	REVISIONS	BY