

TRACT REGISTER OF ACQUISITION AFTER 1, JAN. 1943

Table with columns: AUTH., TRACT NO., LAND OWNER, ACREAGE (FEE, EASMT, PERMIT, TRANS., LICENSE), REMARKS. Lists various land parcels and their owners.

PRELIMINARY

PROJECT MAP

DEPT. OF THE ARMY
USING SERVICE CORPS OF ENGINEERS
LOCATION OF PROJECT
STATE OHIO
COUNTY FAYETTE, HIGHLAND, & ROSS
DIVISION OHIO RIVER
DISTRICT HUNTINGTON
ARMY AREA I ST
50 MILES SW OF COLUMBUS
22 MILES W OF CHILLICOTHE

TRANSPORTATION FACILITIES

RAILROADS
STATE ROADS 138, 41, 753, & 28
FEDERAL ROADS 50
AIR LINES

ACQUISITION

TOTAL ACRES ACQUIRED
FEE
PUBLIC DOMAIN (WITHDRAWAL, USE PERMIT)
USE PERMIT (OTHER THAN P. D.)
TRANSFER
LEASE
LESSER INTERESTS (SEE SEGMENT I)

DISPOSAL

TOTAL ACRES DISPOSED OF
SOLD
PUBLIC DOMAIN (WITHDRAWAL, USE PERMIT)
USE PERMIT (OTHER THAN P. D.)
TRANSFERRED
LEASES TERMINATED
LESSER INTERESTS TERM.
REASSIGNED
OTHER

LEGEND

EXCEPT FOR THE SPECIAL SYMBOLS SHOWN BELOW MAP SYMBOLS ARE STANDARD IN ARMY MAP SERVICE TECHNICAL MANUAL NO. 23.
RESERVATION LINE
RESERVATION LINE (Actual Survey)
TRACT BOUNDARY LINE
TRACT NUMBER
CONTOUR LINE
DISPOSAL
EXTENDED OWNERSHIP LINE

SEGMENT II

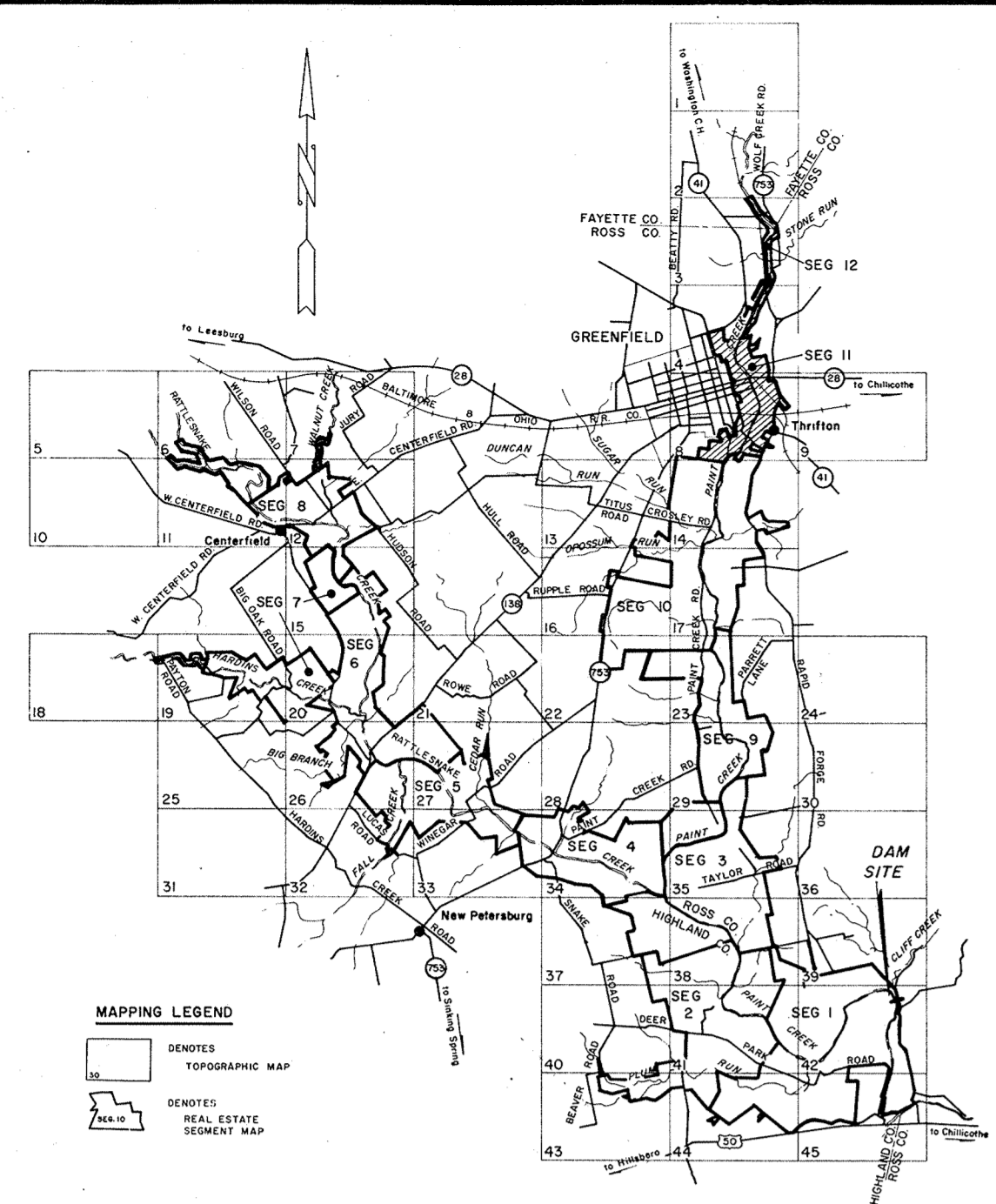
DEPARTMENT OF THE ARMY
U.S. ARMY ENGINEER DISTRICT, HUNTINGTON
CORPS OF ENGINEERS
OHIO RIVER DIVISION

DRAWN BY: H.G.W.
TRACED BY: R.W.A.
CHECKED BY: G.H.B.
SUBMITTED BY: [Signature]
CHIEF, PLANNING & CONTROL, BR

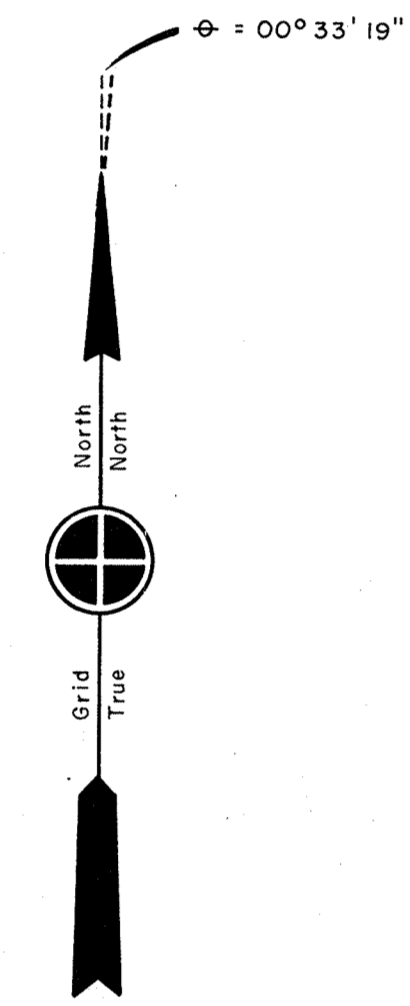
REAL ESTATE
PAINT CREEK LAKE

APPROVED BY: [Signature]
DATE: 23 April 44
OFFICE, CHIEF OF ENGINEERS, WASHINGTON 25, D. C.

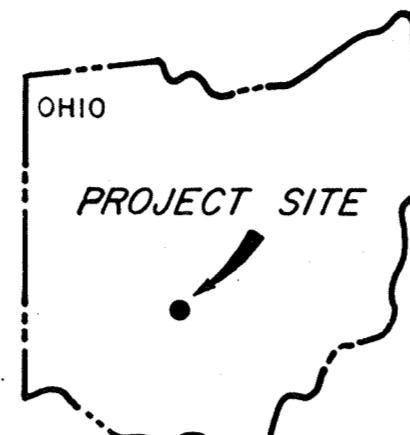
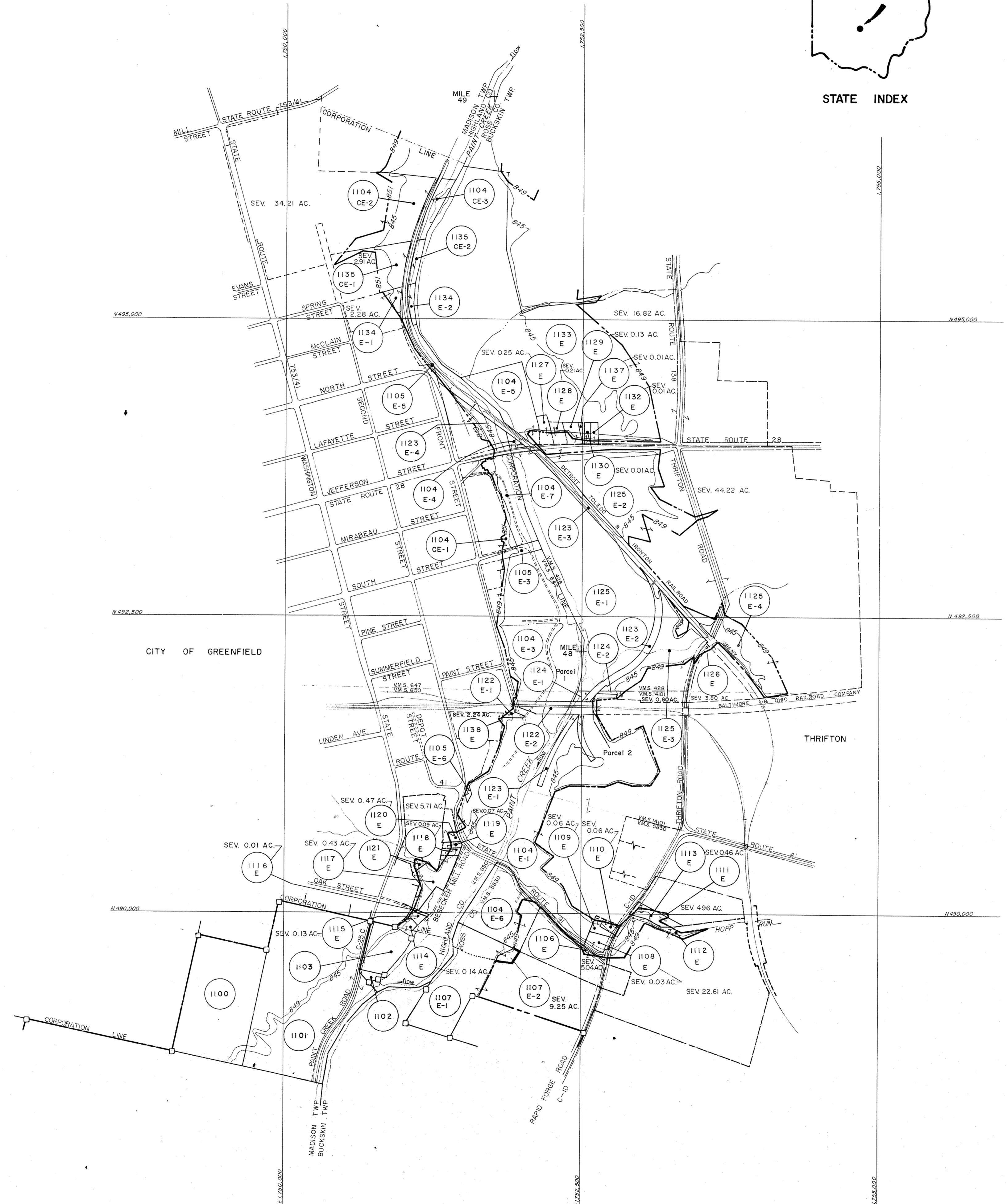
INSTALLATION OR PROJECT NO.
SHEET 11 OF 12
DRAWING NO.



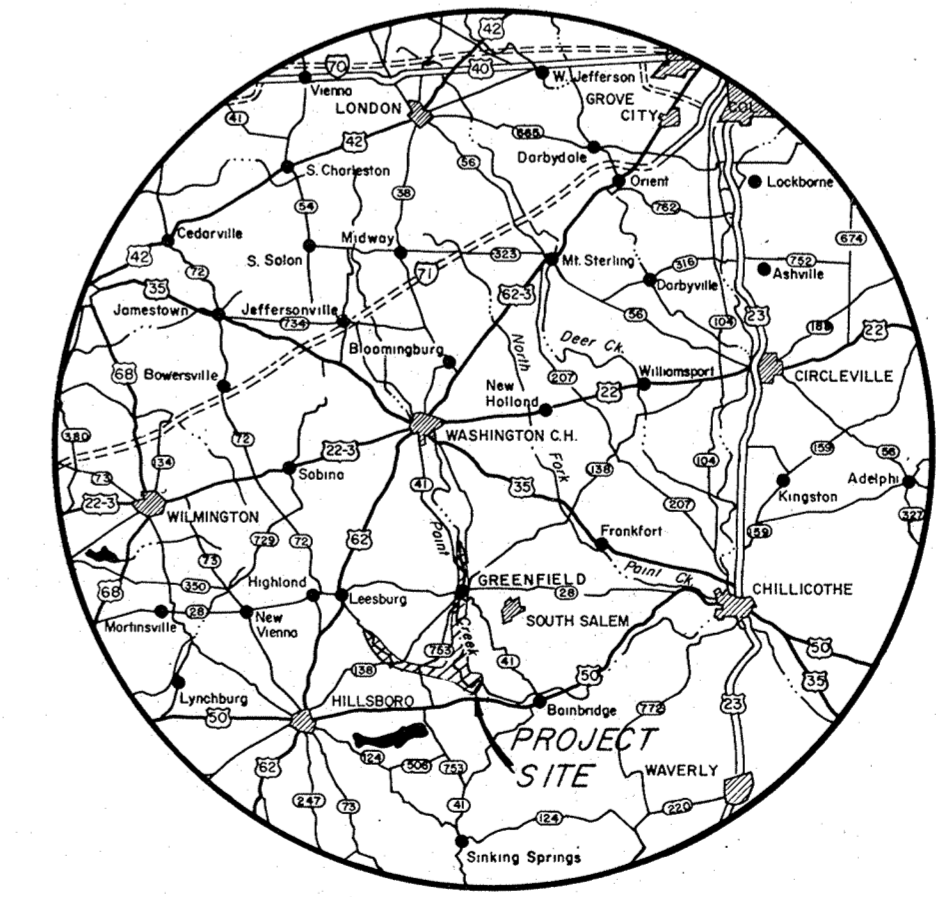
SEGMENT MAP INDEX
ONE INCH EQUALS APPROXIMATELY 2 MILES



SEGMENT 12



STATE INDEX



VICINITY MAP
SCALE IN MILES

NOTES
The boundary of this project was compiled from deed descriptions, and aerial surveys, etc.
This map is drawn on the Ohio State Plane Coordinate System, South Zone.
The aerial photography, ground control and mapping of the land depicted on this sheet was performed by Berger Associates, Ltd., Columbus, Ohio, under Contract No. DA-46-022-CIVENG-63-497.
Tract numbers having "E" suffix denotes usual type perpetual flowage easements unless otherwise specified.
CONTOUR LEGEND
851 Guide Taking Contour - Cemeteries Only
945 Guide Taking Contour
945 Maximum Flood Control Pool
796 Permanent Pool

SEGMENT 10

Table with columns: MICROFILMED, DATE, REVISIONS, BY