

TRACT REGISTER OF ACQUISITION AFTER 1, JAN. 1943

AUTH.	TRACT NO.	LAND OWNER	ACREAGE					REMARKS
			FEE	EASMT	PERMIT	TRANS.	LICENSE	
D.M. No. 9	900	KENNETH L. & AMELIA E. BENNER	50.84					
"	901	GIE E. HOWLAND & A. GIE HOWLAND & DOROTHY HOWLAND	116.87					
"	902	HARRY H. FISHER	34.66					
"	903	ROBERT BURGESS, ET UX	81.08					
"	904	ROBERT J. RALPH	14.52					
"	905	EDITH ROADS	130.55					
D.M. No. 9	907	CLARENCE R. GRUBB	5.84					
"	907-C	CLARENCE R. GRUBB	0.02					
"	908	OTIS T. WAGNER & MILDRED T. WAGNER	29.31					
"	909	GLENN PENN & MARGUERITE PENN	44.89					
"	909-E	GLENN PENN & MARGUERITE PENN		0.68				
"	910	ROBERT LEWIS, ET UX	87.75					
"	912	HARLEY K. SOALES & DOROTHY J. SOALES	58.96					
"	912E	HARLEY K. SOALES & DOROTHY J. SOALES		0.66				

PRELIMINARY

PROJECT MAP

DEPT. OF THE ARMY

USING SERVICE CORPS OF ENGINEERS

LOCATION OF PROJECT

STATE OHIO

COUNTY FAYETTE, HIGHLAND, & ROSS

DIVISION OHIO RIVER

DISTRICT HUNTINGTON

ARMY AREA 1 ST

50 MILES SW OF COLUMBUS

22 MILES W OF CHILLICOTHE

TRANSPORTATION FACILITIES

RAILROADS

STATE ROADS 138, 41, 753, & 28

FEDERAL ROADS 50

AIR LINES

ACQUISITION

TOTAL ACRES ACQUIRED

FEE

PUBLIC DOMAIN (WITHDRAWAL)

USE PERMIT

USE PERMIT (OTHER THAN P. D.)

TRANSFER

LEASE

LESSER INTERESTS (SEE SEGMENT 1)

DISPOSAL

TOTAL ACRES DISPOSED OF

SOLD

PUBLIC DOMAIN (WITHDRAWAL)

USE PERMIT

USE PERMIT (OTHER THAN P. D.)

TRANSFERRED

LEASES TERMINATED

LESSER INTERESTS TERM.

REASSIGNED

OTHER

LEGEND

EXCEPT FOR THE SPECIAL SYMBOLS SHOWN BELOW MAP SYMBOLS ARE STANDARD IN ARMY MAP SERVICE TECHNICAL MANUAL NO. 23.

- RESERVATION LINE
- RESERVATION LINE (Actual Survey)
- TRACT BOUNDARY LINE
- TRACT NUMBER
- CONTOUR LINE
- INTERIOR FEE TAKING LINE
- EXTENDED OWNERSHIP LINE

SEGMENT 9

DEPARTMENT OF THE ARMY
U. S. ARMY ENGINEER DISTRICT, HUNTINGTON
CORPS OF ENGINEERS
OHIO RIVER DIVISION

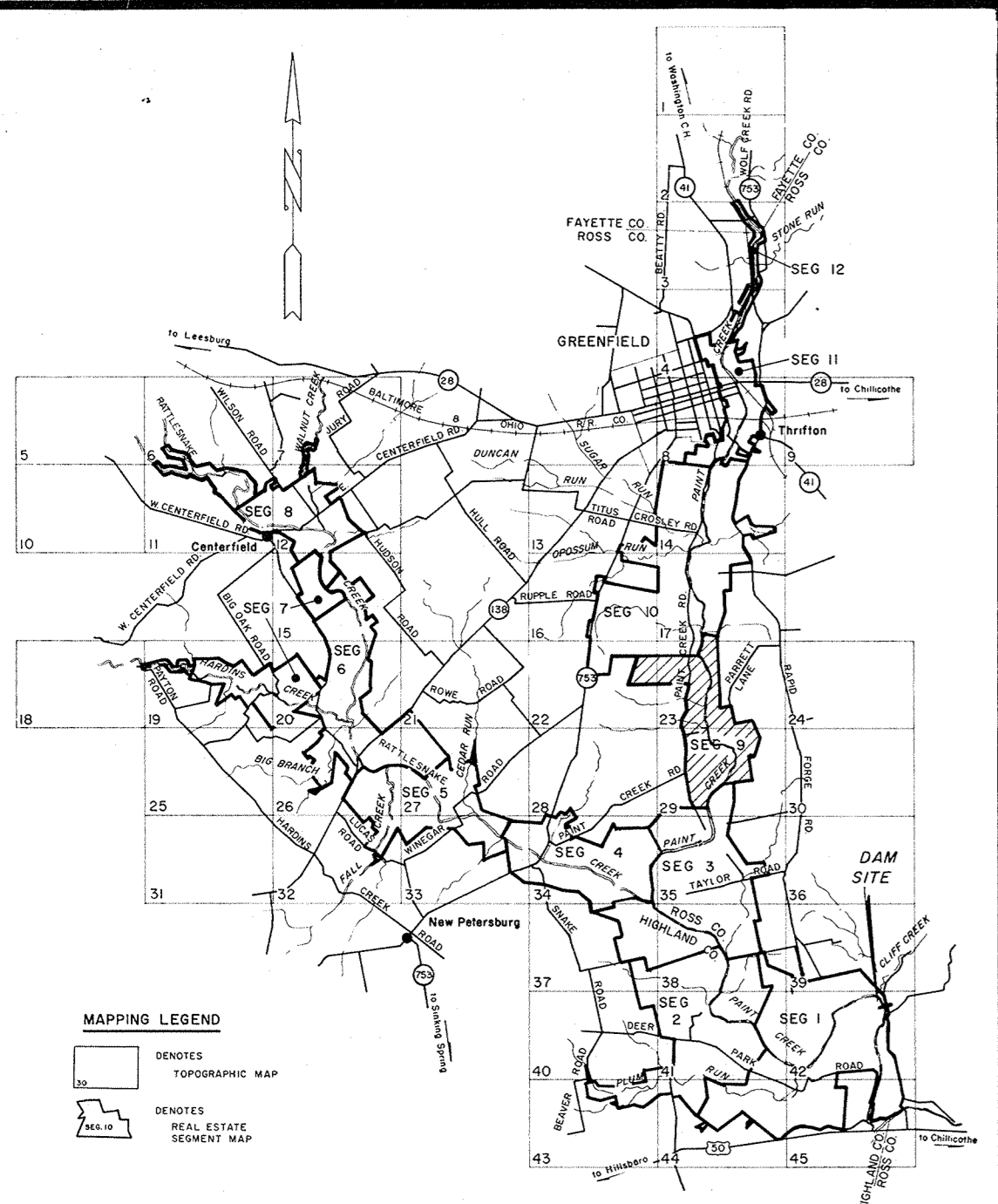
DRAWN BY JOHN SPENCER
TRACED BY JOHN SPENCER
CHECKED BY BEN HOOPF
SUBMITTED BY
CHIEF, PLANNING & CONTROL BR

RECOMMENDED BY
OFFICE, CHIEF OF ENGINEERS, WASHINGTON 25, D. C.

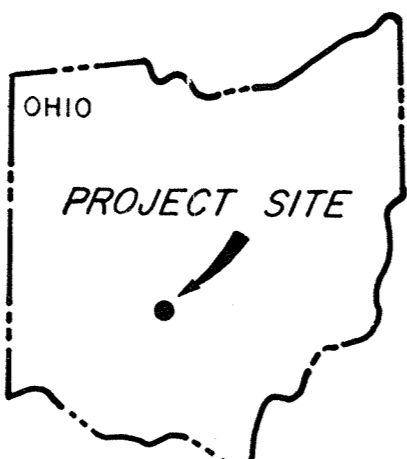
REAL ESTATE
PAINT CREEK LAKE

APPROVED BY
DATE NOVEMBER 1966

SCALE IN FEET
500 0 500 1000
SHEET 9 OF 12 DRAWING NO.

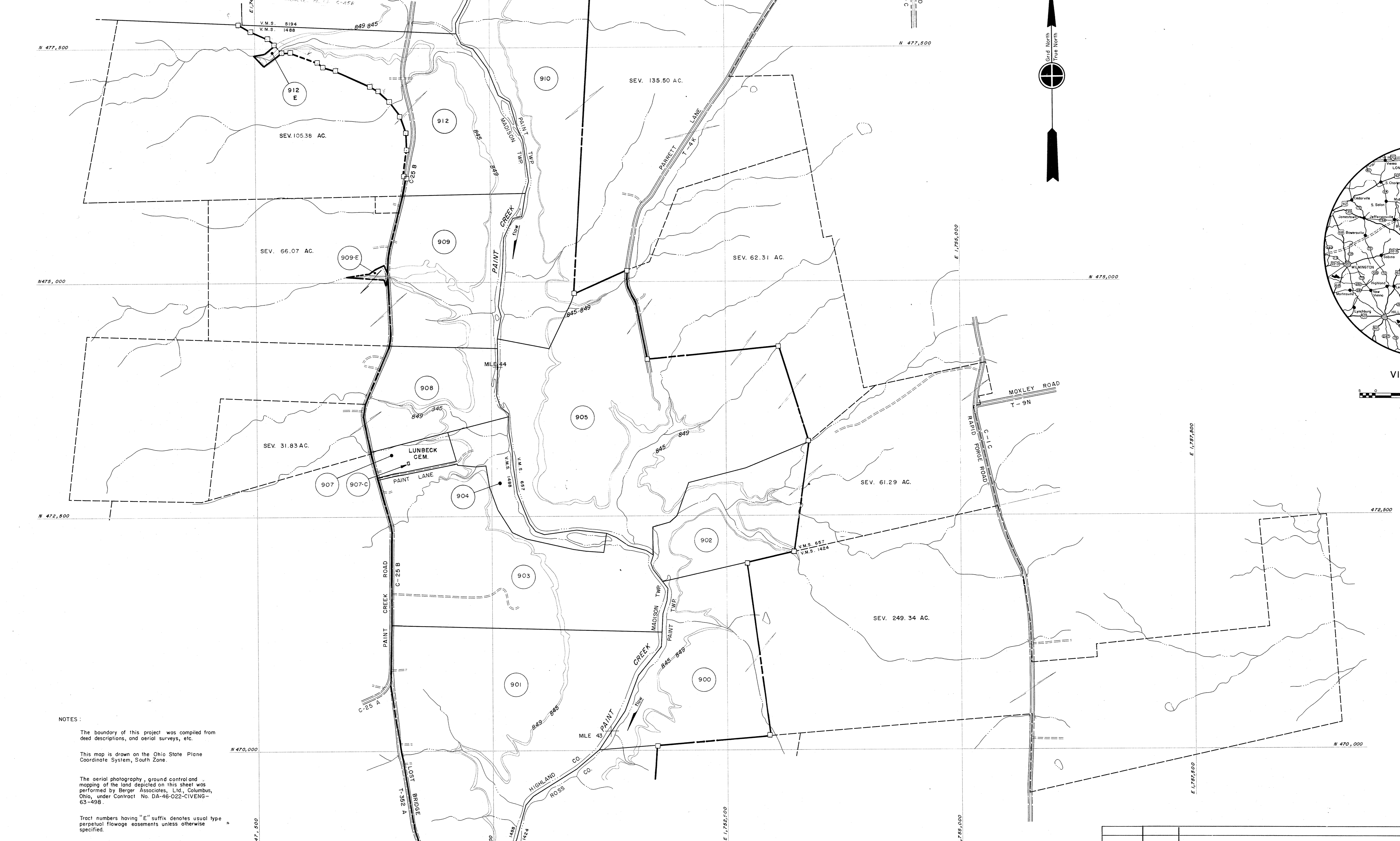


SEGMENT 10

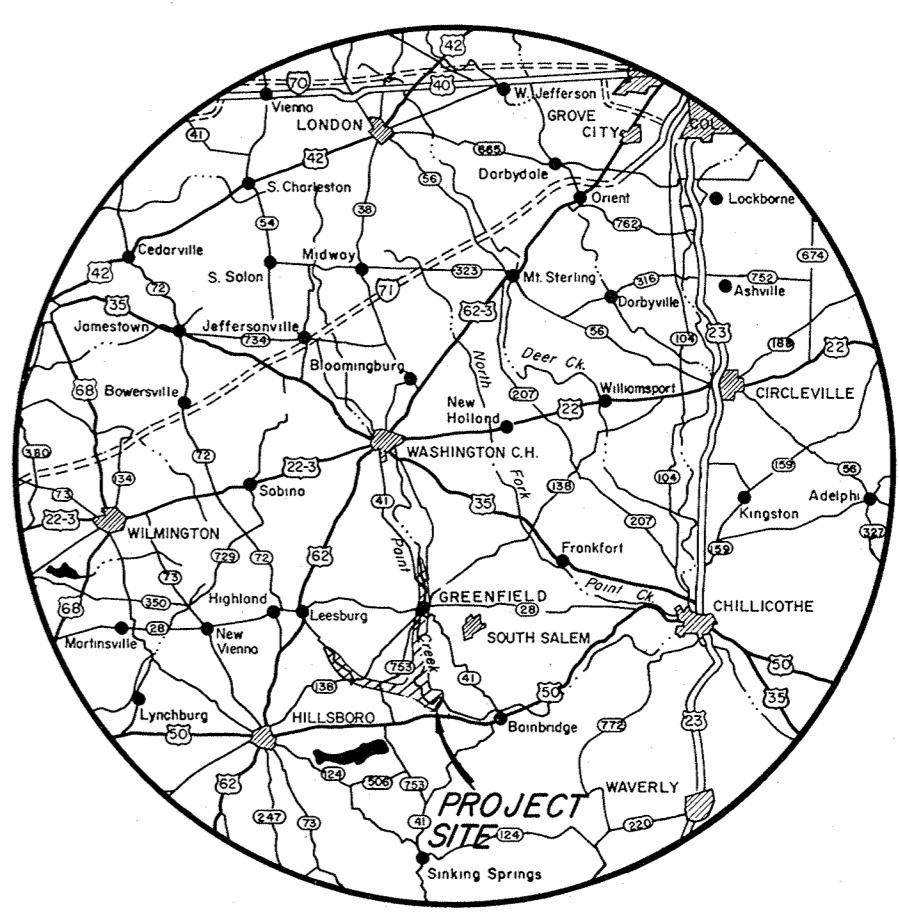


STATE INDEX

SEGMENT MAP INDEX
ONE INCH EQUALS APPROXIMATELY 2 MILES



SEGMENT 3



VICINITY MAP

SCALE IN MILES

NOTES:

The boundary of this project was compiled from deed descriptions, and aerial surveys, etc.

This map is drawn on the Ohio State Plane Coordinate System, South Zone.

The aerial photography, ground control and mapping of the land depicted on this sheet was performed by Berger Associates, Ltd., Columbus, Ohio, under Contract No. DA-46-022-CIVENG-63-498.

Tract numbers having "E" suffix denotes usual type perpetual flowage easements unless otherwise specified.

- CONTOUR LEGEND
- 845 Guide Taking Contour
 - 845 Maximum Flood Control Pool
 - 750 Permanent Pool

MICROFILMED	DATE	REVISIONS	BY