

TRACT REGISTER OF ACQUISITION AFTER 1, JAN. 1943

AUTH.	TRACT NO.	LAND OWNER	ACREAGE					REMARKS
			FEE	EASMT	PERMIT	TRANS.	LICENSE	
DM NO. 9	500	LEO & CLEO COOPER	23.14					
"	501	PATRICIA WOOD, FORMERLY PATRICIA WOOD BRUCE, WIFE OF BRUCE A. WOOD &	135.57					
"	502-1	DWIGHT COFFMAN, ET AL.	21.09					
"	502-2	DWIGHT COFFMAN, ET AL.	33.27					
"	503	EUGENE R. COWMAN, ET AL.	29.47					
"	504	FRED MILLER	12.43					
"	505	WILLIAM CHAIN, ET UX	155.58					
"	507E	GEORGE C. ROE & EMMA B. ROE		0.22				PERPETUAL EASEMENT FOR HIGHWAY PURPOSES
DM NO. 9	507	GEORGE C. ROE & EMMA B. ROE	166.11					
"	508	FLOY H. LUCAS	43.02					
"	509 E	JENNIE MERSHON		1.14				
"	510 E	GEORGE C. ROE & EMMA B. ROE		4.53				
"	511	WYLA C. GODDARD, ET UX	28.76					
"	512	GORDON ARNOTT, ET AL.	109.50					
"	513	DEAN SIMMONS, ET UX	54.79					
"	514 E 1	BETTY S. TURNER, ET AL.		2.99				
"	514 E 2	BETTY S. TURNER, ET AL.		6.05				

PRELIMINARY

PROJECT MAP

DEPT. OF THE ARMY
 USING SERVICE CORPS OF ENGINEERS
LOCATION OF PROJECT
 STATE OHIO
 COUNTY FAYETTE, HIGHLAND, & ROSS
 DIVISION OHIO RIVER
 DISTRICT HUNTINGTON
 ARMY AREA I ST
 50 MILES SW OF COLUMBUS
 22 MILES W OF CHILLICOTHE

TRANSPORTATION FACILITIES

RAILROADS
 STATE ROADS 138, 41, 753, & 28
 FEDERAL ROADS 50
 AIR LINES

ACQUISITION

TOTAL ACRES ACQUIRED
 FEE
 PUBLIC DOMAIN WITHDRAWAL
 USE PERMIT
 USE PERMIT (OTHER THAN P. D.)
 TRANSFER
 LEASE
 LESSER INTERESTS SEE SEGMENT 1

DISPOSAL

TOTAL ACRES DISPOSED OF
 SOLD
 PUBLIC DOMAIN WITHDRAWAL
 USE PERMIT
 USE PERMIT (OTHER THAN P. D.)
 TRANSFERRED
 LEASES TERMINATED
 LESSER INTERESTS TERM.
 REASSIGNED
 OTHER SEE SEGMENT 1

LEGEND

EXCEPT FOR THE SPECIAL SYMBOLS SHOWN BELOW MAP SYMBOLS ARE STANDARD IN ARMY MAP SERVICE TECHNICAL MANUAL NO. 23.

RESERVATION LINE
 RESERVATION LINE (Actual Survey)
 TRACT BOUNDARY LINE
 TRACT NUMBER
 CONTOUR LINE
 INTERIOR FEE TAKING LINE
 EXTENDED OWNERSHIP LINE

SEGMENT 5

DEPARTMENT OF THE ARMY
 U. S. ARMY ENGINEER DISTRICT, HUNTINGTON
 CORPS OF ENGINEERS
 OHIO RIVER DIVISION

REAL ESTATE

PAINT CREEK LAKE

ACQUISITION AUTHORIZATION

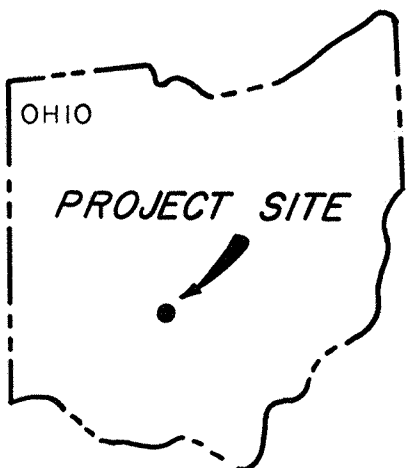
ENGINE-AP 2 rd. 1st. dated 30 June 1966 (D. M. No. 9)

DRAWN BY JOHN SPENCER
 TRACED BY JOHN SPENCER
 CHECKED BY BEN HOOFF
 SUBMITTED BY
 RECOMMENDED BY
 APPROVED BY

OFFICE, CHIEF OF ENGINEERS, WASHINGTON 25, D. C. DATE JUNE 1966

SCALE IN FEET
 500 0 500 1000

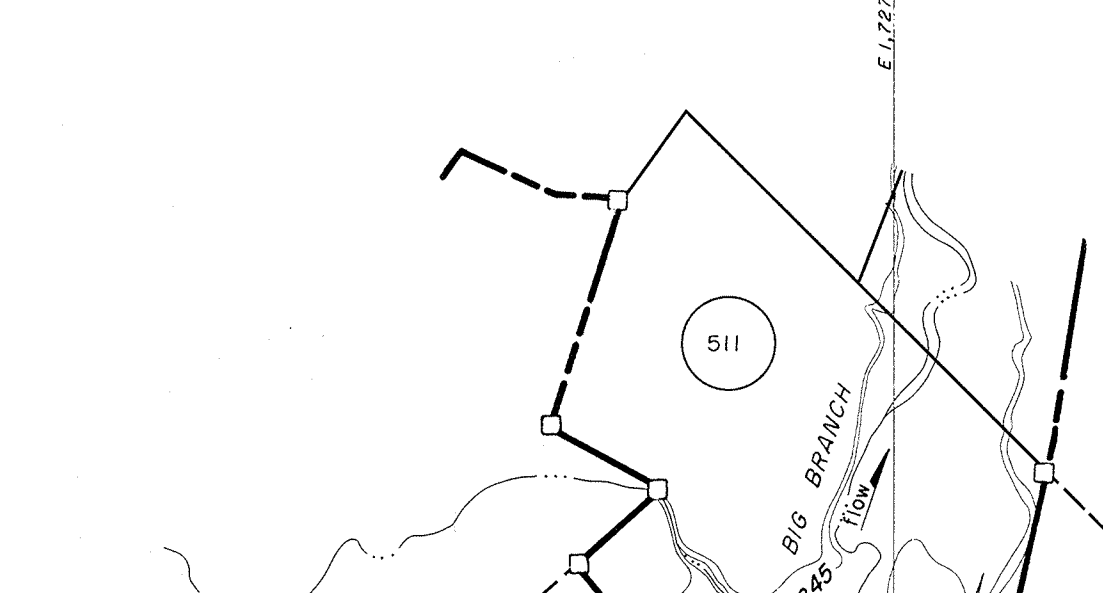
SHEET 5 OF 12 DRAWING NO.



STATE INDEX

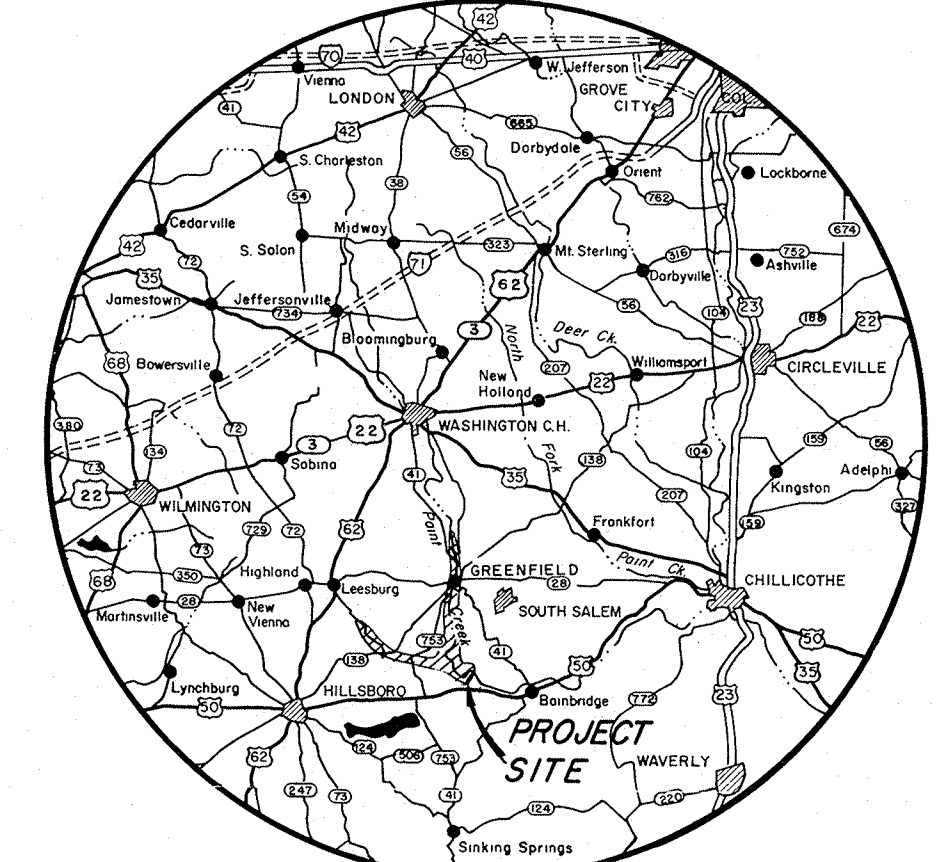
SEGMENT MAP INDEX

ONE INCH EQUALS APPROXIMATELY 2 MILES



SEGMENT 6

SEGMENT 4



VICINITY MAP

SCALE IN MILES

NOTES

The boundary of this project was compiled from deed descriptions, and aerial surveys, etc.
 This map is drawn on the Ohio State Plane Coordinate System, South Zone.
 The aerial photography, ground control and mapping of the land depicted on this sheet was performed by Berger Associates, Ltd., Columbus, Ohio, under Contract No. DA-46-022-CIVENG-63-498.
 Tract numbers having "E" suffix denotes usual type perpetual flowage easements unless otherwise specified.

CONTOUR LEGEND
 849 Guide Taking Contour
 848 Maximum Flood Control Pool
 796 Permanent Pool

MICROFILMED	DATE	ADDED TRACT NOTE	REVISIONS	BY
	9-30-68	ADDED TRACT NOTE		DET